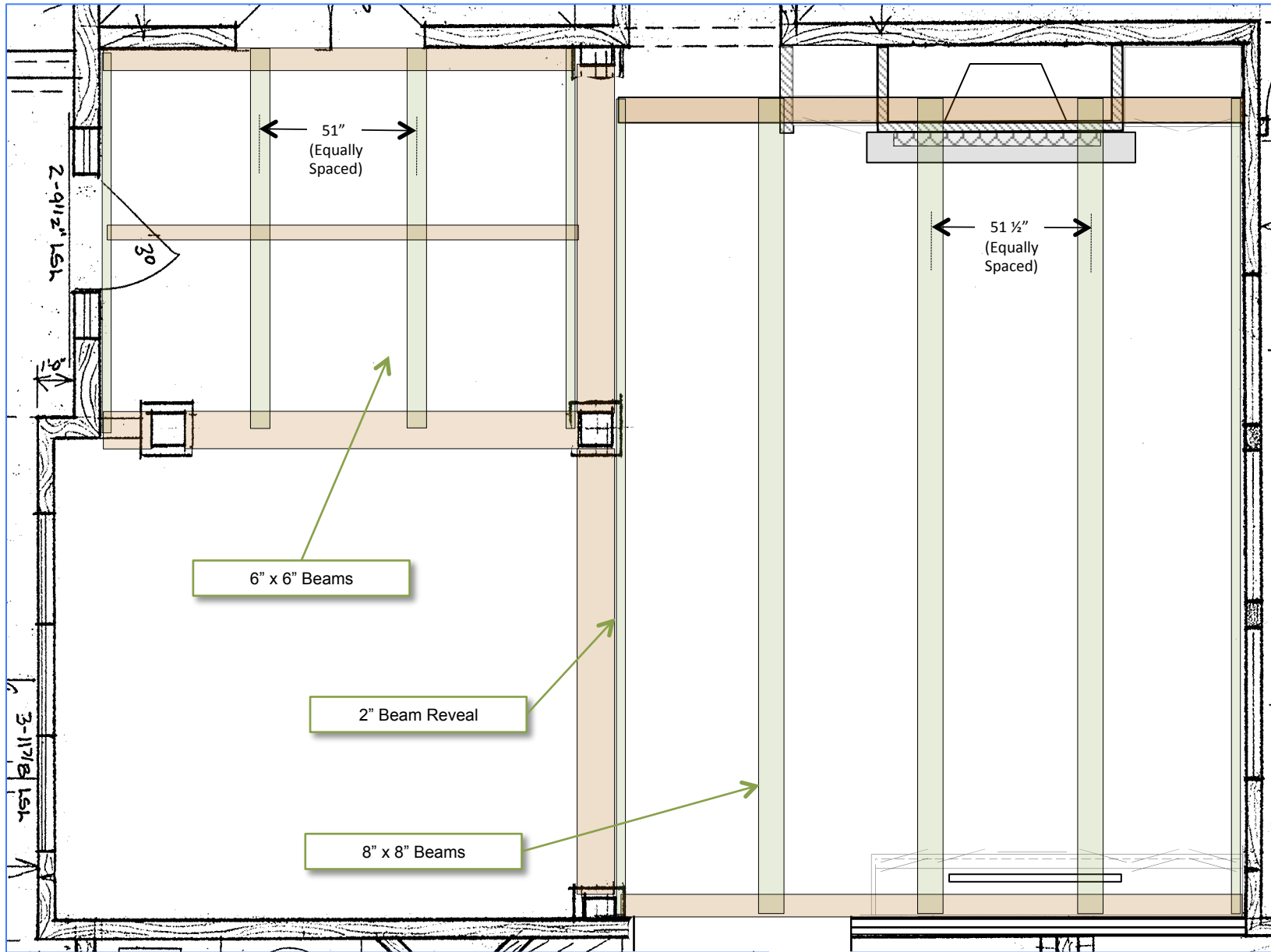


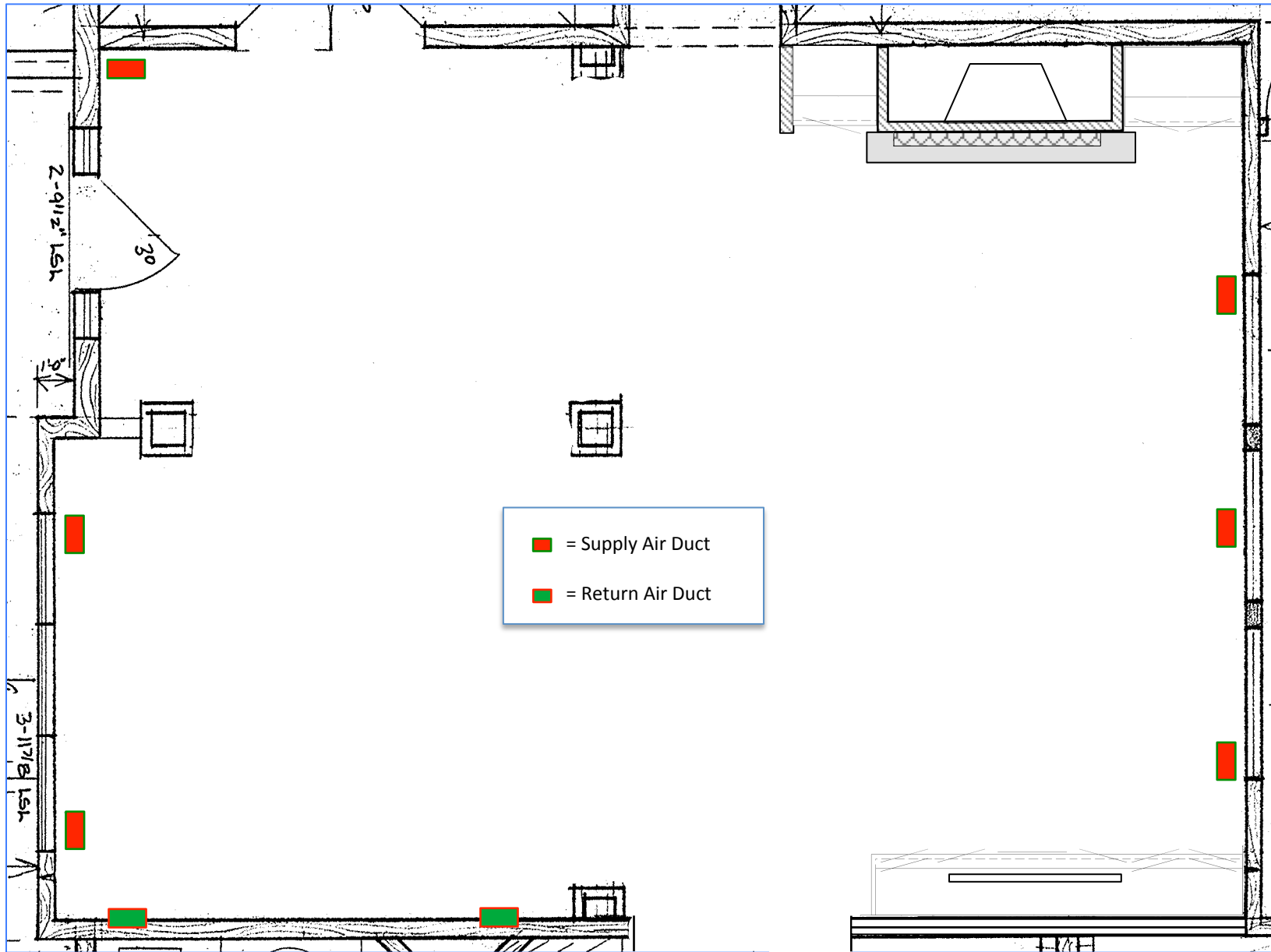
Floor Plan

Scale: 4' per inch



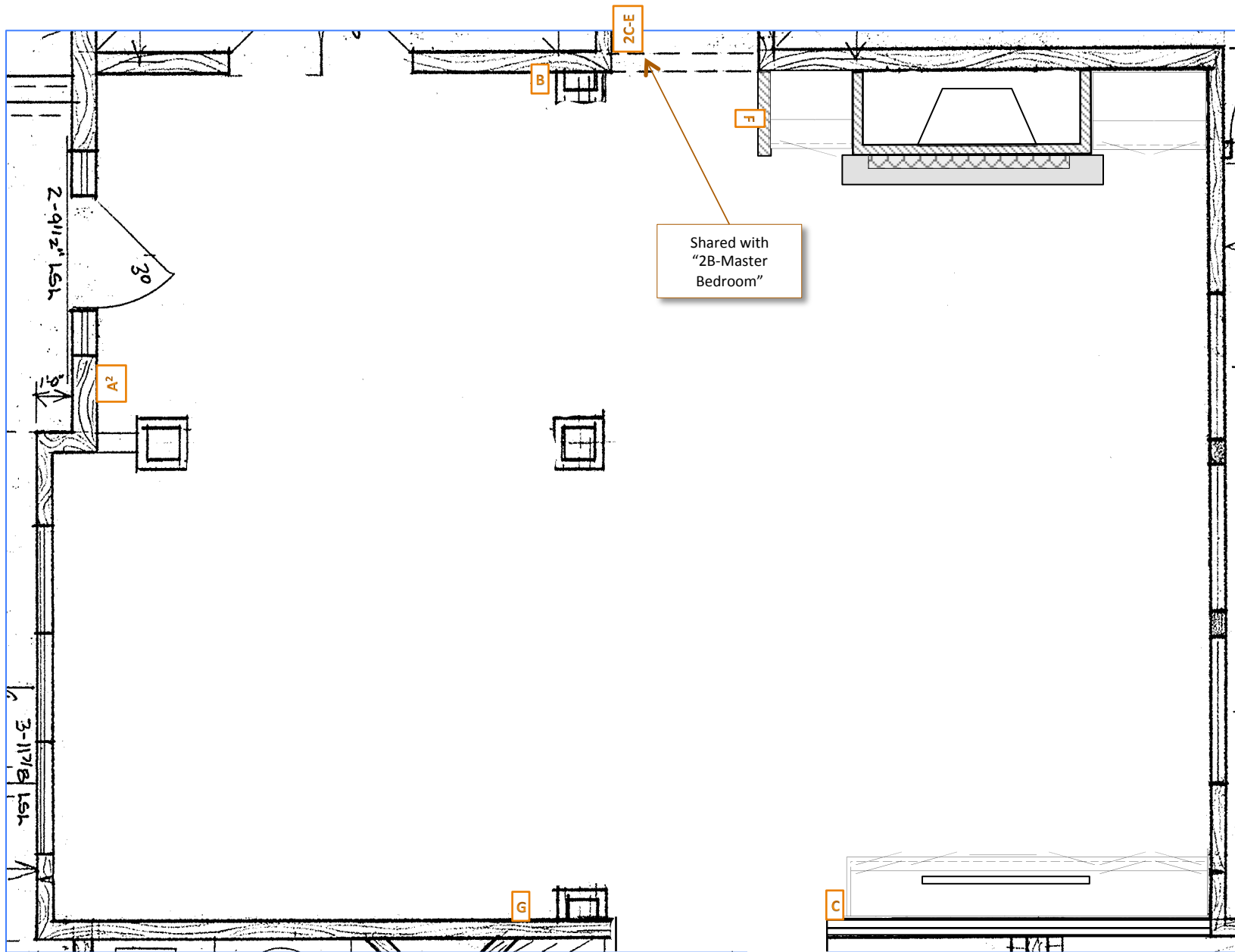
Foyer Arched Beams

Scale: 4' per inch



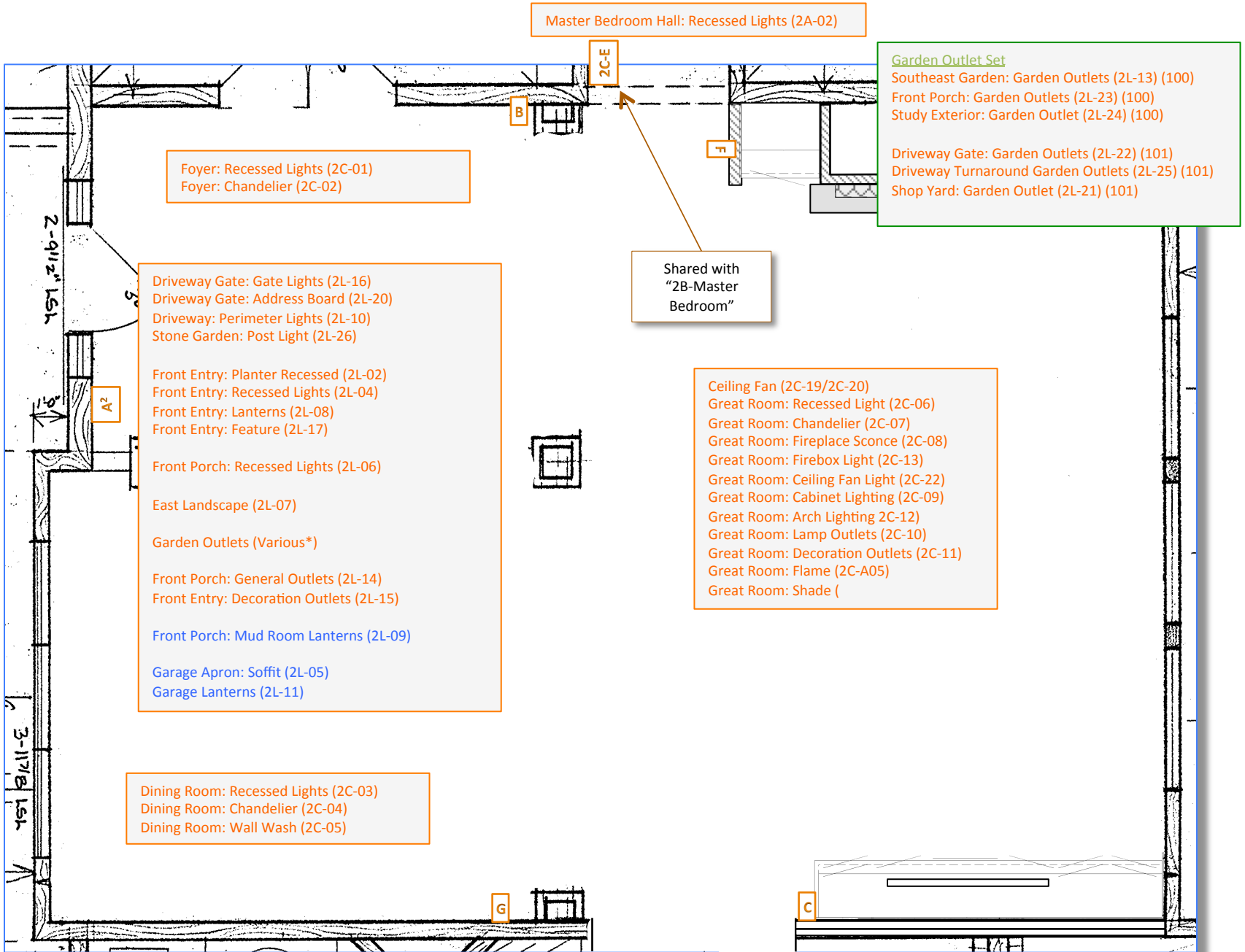
HVAC Duct Locations

Scale: 4' per inch



X = Switch Cluster

Scale: 4' per inch



Foyer: Recessed Lights (2C-01)
Foyer: Chandelier (2C-02)

Master Bedroom Hall: Recessed Lights (2A-02)

Garden Outlet Set
Southeast Garden: Garden Outlets (2L-13) (100)
Front Porch: Garden Outlets (2L-23) (100)
Study Exterior: Garden Outlet (2L-24) (100)

Driveway Gate: Garden Outlets (2L-22) (101)
Driveway Turnaround Garden Outlets (2L-25) (101)
Shop Yard: Garden Outlet (2L-21) (101)

Driveway Gate: Gate Lights (2L-16)
Driveway Gate: Address Board (2L-20)
Driveway: Perimeter Lights (2L-10)
Stone Garden: Post Light (2L-26)

Front Entry: Planter Recessed (2L-02)
Front Entry: Recessed Lights (2L-04)
Front Entry: Lanterns (2L-08)
Front Entry: Feature (2L-17)

Front Porch: Recessed Lights (2L-06)

East Landscape (2L-07)

Garden Outlets (Various*)

Front Porch: General Outlets (2L-14)
Front Entry: Decoration Outlets (2L-15)

Front Porch: Mud Room Lanterns (2L-09)

Garage Apron: Soffit (2L-05)
Garage Lanterns (2L-11)

Shared with
"2B-Master
Bedroom"

Ceiling Fan (2C-19/2C-20)
Great Room: Recessed Light (2C-06)
Great Room: Chandelier (2C-07)
Great Room: Fireplace Sconce (2C-08)
Great Room: Firebox Light (2C-13)
Great Room: Ceiling Fan Light (2C-22)
Great Room: Cabinet Lighting (2C-09)
Great Room: Arch Lighting 2C-12)
Great Room: Lamp Outlets (2C-10)
Great Room: Decoration Outlets (2C-11)
Great Room: Flame (2C-A05)
Great Room: Shade (

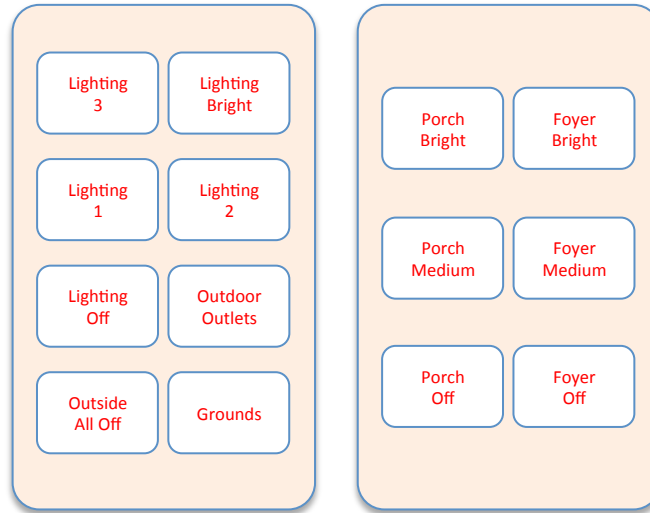
Dining Room: Recessed Lights (2C-03)
Dining Room: Chandelier (2C-04)
Dining Room: Wall Wash (2C-05)

X = Switch Cluster

Scale: 4' per inch

Lighting Controls

Keypad Location 2C-A (L&R)
Foyer, Entry Door



Foyer: Recessed Lights (2C-01)
Foyer: Chandelier (2C-02)

Driveway Gate: Gate Lights (2L-16)
Driveway Gate: Address Board (2L-20)
Driveway: Perimeter Lights (2L-10)
Stone Garden: Post Light (2L-26)

Front Entry: Planter Recessed (2L-02)
Front Entry: Recessed Lights (2L-04)
Front Entry: Lanterns (2L-08)
Front Entry: Feature (2L-17)

Front Porch: Recessed Lights (2L-06)

East Landscape (2L-07)

Garden Outlets (Various*)

Front Porch: General Outlets (2L-14)
Front Entry: Decoration Outlets (2L-15)

Front Porch: Mud Room Lanterns (2L-09)

Garage Apron: Soffit (2L-05)
Garage Lanterns (2L-11)

Cables
3 – White

Keypad Location 2C-B
Foyer, Great Room Passage



Foyer: Recessed Lights (2C-01)
Foyer: Chandelier (2C-02)

Cables
1 - White

Keypad Location 2C-C
Great Room, Kitchen Passage East

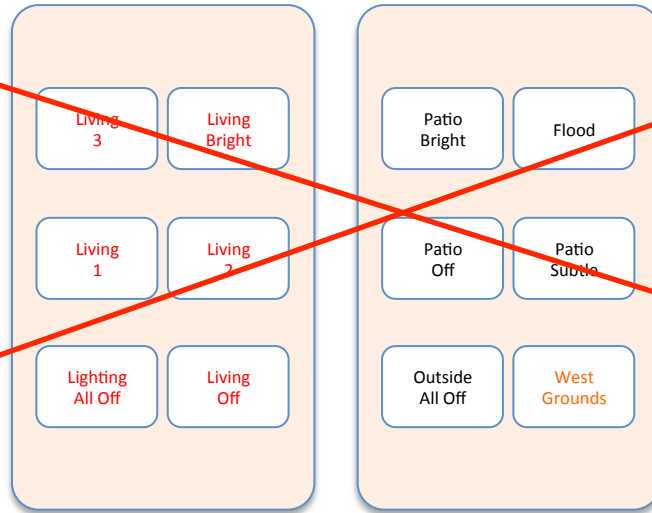


Ceiling Fan (2C-19/2C-20)
Great Room: Recessed Light (2C-06)
Great Room: Chandelier (2C-07)
Great Room: Fireplace Sconce (2C-08)
Great Room: Firebox Light (2C-13)
Great Room: Ceiling Fan Light (2C-22)
Great Room: Cabinet Lighting (2C-09)
Great Room: Arch Lighting (2C-12)
Great Room: Lamp Outlets (2C-10)
Great Room: Decoration Outlets (2C-11)
Great Room: Flame (2C-A05)
Great Room: Shade (

Cables
2 – White

Keypad Location 2C-D (L&R)
Great Room, Kitchen Passage West

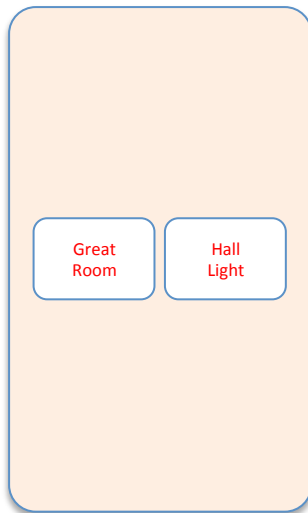
Cables
2 – White
1 – Green



- Ceiling Fan (2C-19/2C-20)
- Great Room: Recessed Light (2C-06)
- Great Room: Chandelier (2C-07)
- Great Room: Fireplace Scones (2C-08)
- Great Room: Firebox Light (2C-13)
- Great Room: Ceiling Fan Light (2C-22)
- Great Room: Cabinet Lighting (2C-09)
- Great Room: Arch Lighting 2C-12)
- Great Room: Lamp Outlets (2C-10)
- Great Room: Decoration Outlets (2C-11)
- Great Room: Flame (2C-A05)
- Great Room: Shade (

- Hot Tub: Landscape (2M-17)
- Hot Tub: Soffit (2M-02)
- Patio: West Landscape (2M-01)
- Open Deck: Soffit (2M-05)
- Open Deck: Floodlight (2M-07)
- Open Deck: Walk Light (2M-19)
- Covered Deck: Lights (2M-09/2M-10)
- Stone Stairs: Soffit (2M-06)
- Walkout: North Landscape (2M-11)

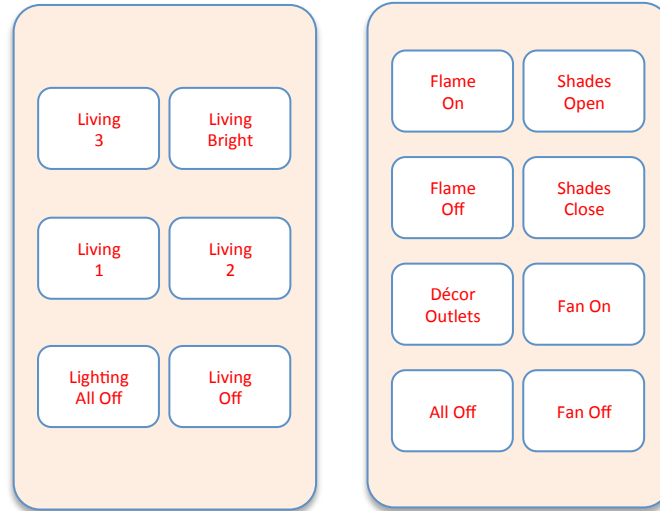
Keypad Location 2C-E
Master Bedroom Hall



- Master Bedroom Hall:
Recessed Lights (2A-02)

Cables
1 - White

Keypad Location 2C-F (L&R)
Great Room



- Ceiling Fan (2C-19/2C-20)
- Great Room: Recessed Light (2C-06)
- Great Room: Chandelier (2C-07)
- Great Room: Fireplace Sconce (2C-08)
- Great Room: Firebox Light (2C-13)
- Great Room: Ceiling Fan Light (2C-22)
- Great Room: Cabinet Lighting (2C-09)
- Great Room: Arch Lighting 2C-12)
- Great Room: Lamp Outlets (2C-10)
- Great Room: Decoration Outlets (2C-11)
- Great Room: Flame (2C-A05)
- Great Room: Shade (

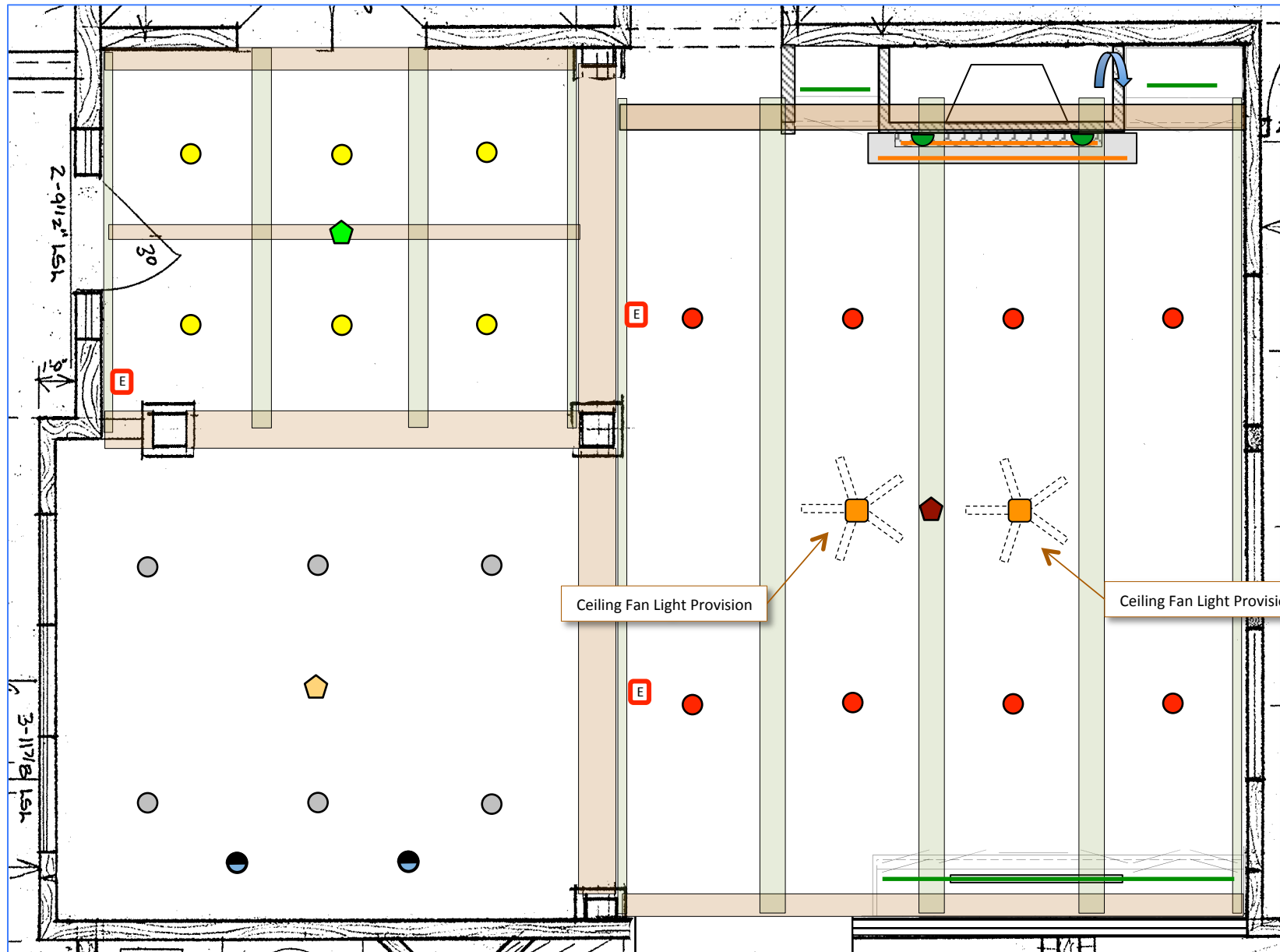
Cables
3 – White

Keypad Location 2C-G
Dining, Kitchen Passage



- Dining Room: Recessed Lights (2C-03)
- Dining Room: Chandelier (2C-04)
- Dining Room: Wall Wash (2C-05)

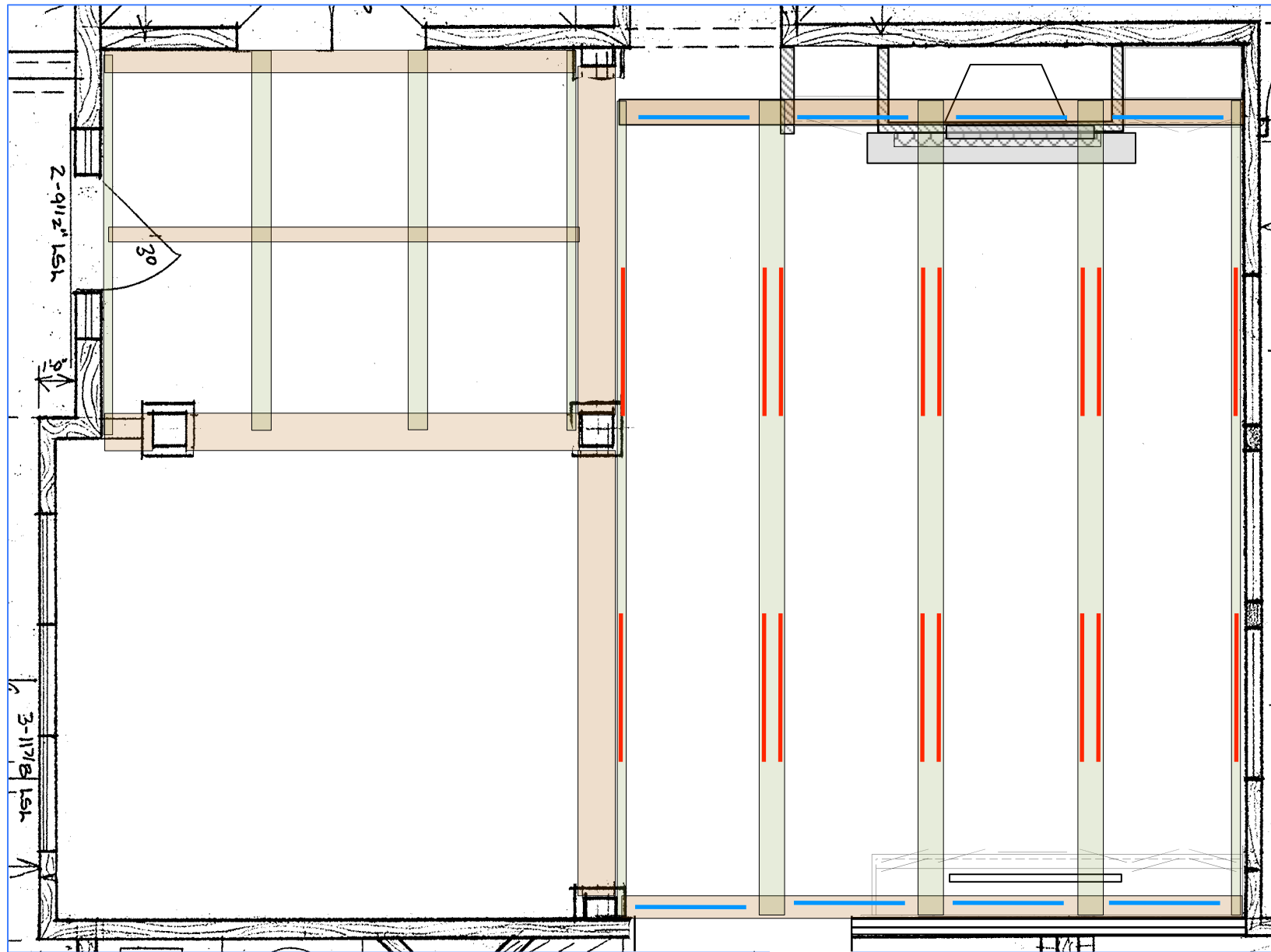
Cables
1 - White



Lighting 1

Lighting Key on Next Page


Scale: 4' per inch





Lighting 2


Lighting Key on Next Page

Scale: 4' per inch


 = 6" Sloped Recessed (2C-01)

 = Chandelier (2C-02)

 = 6" LED Recessed (2C-03)


 = Chandelier (2C-04)


 = Ceiling Fan Light (2C-22)


 = 6" Sloped Recessed (2C-06)


 = Chandelier (2C-07)


 = Standby Light


 = 6" Incand, Gimbaled Recessed (Wall Wash) (2C-05)


 = Sconce (2C-08)

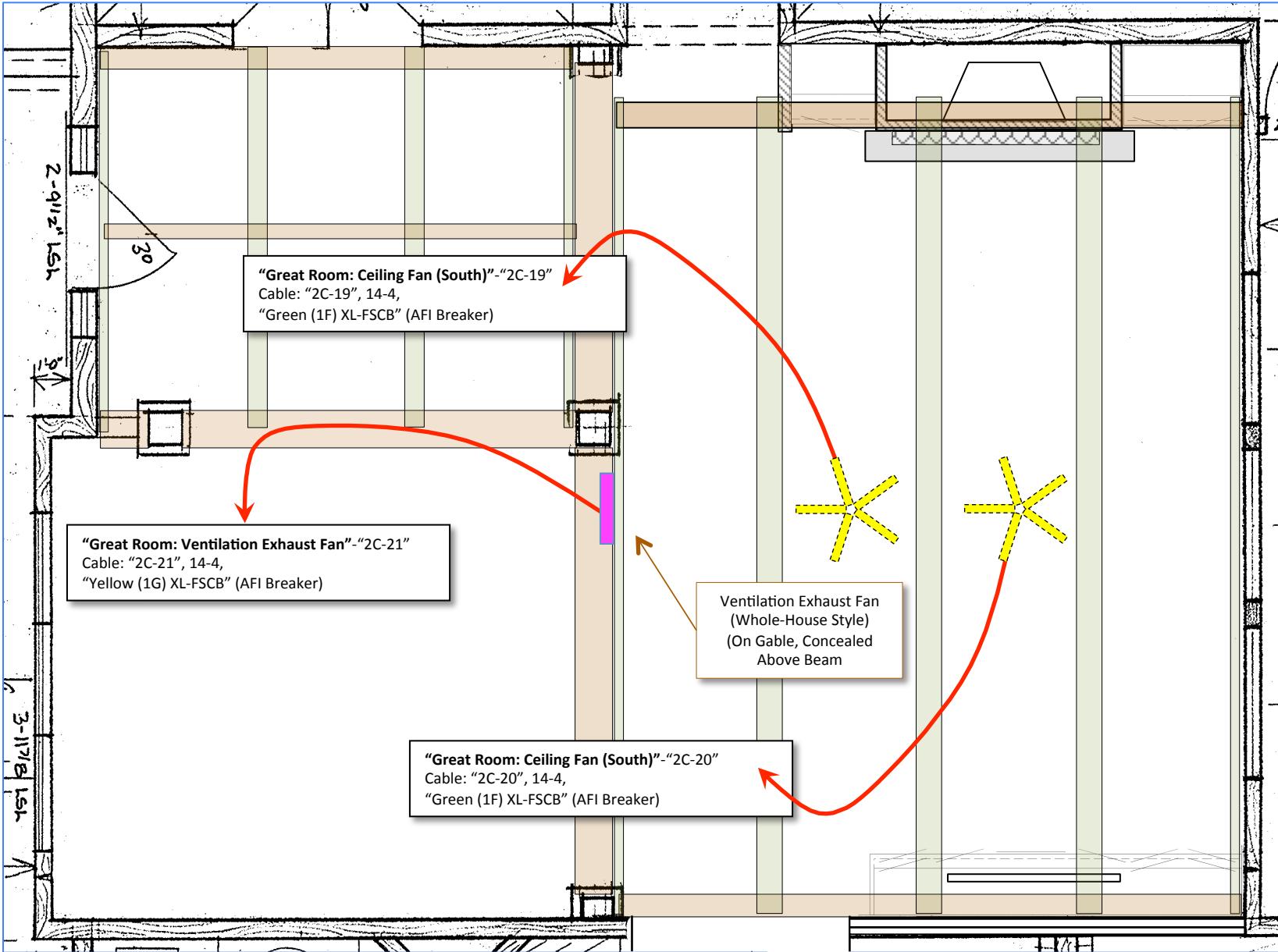
 = Firebox Blower (spare = 2C-14)

 = LED Up-Lighting - Rafters (2C-T12)
(48 lineal ft)

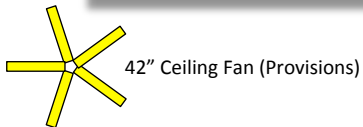
 = Mantel & Hearth LED Lighting (2C-T13)

 = LED Up-Lighting – Side Beams (2C-T01)
(24 Lineal ft)

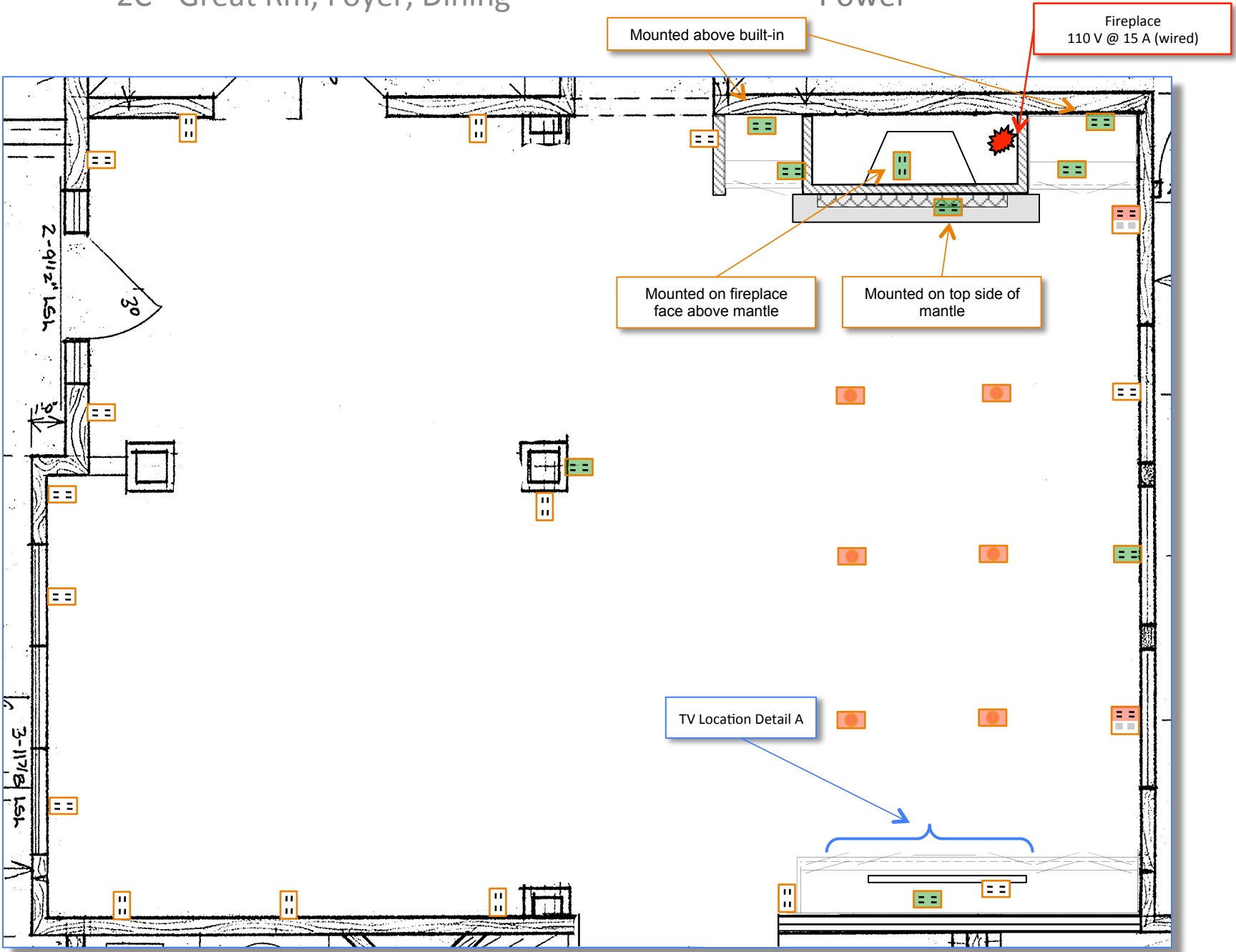
 = LED Up-lighting - Cabinet (2C-T09)



Ventilation



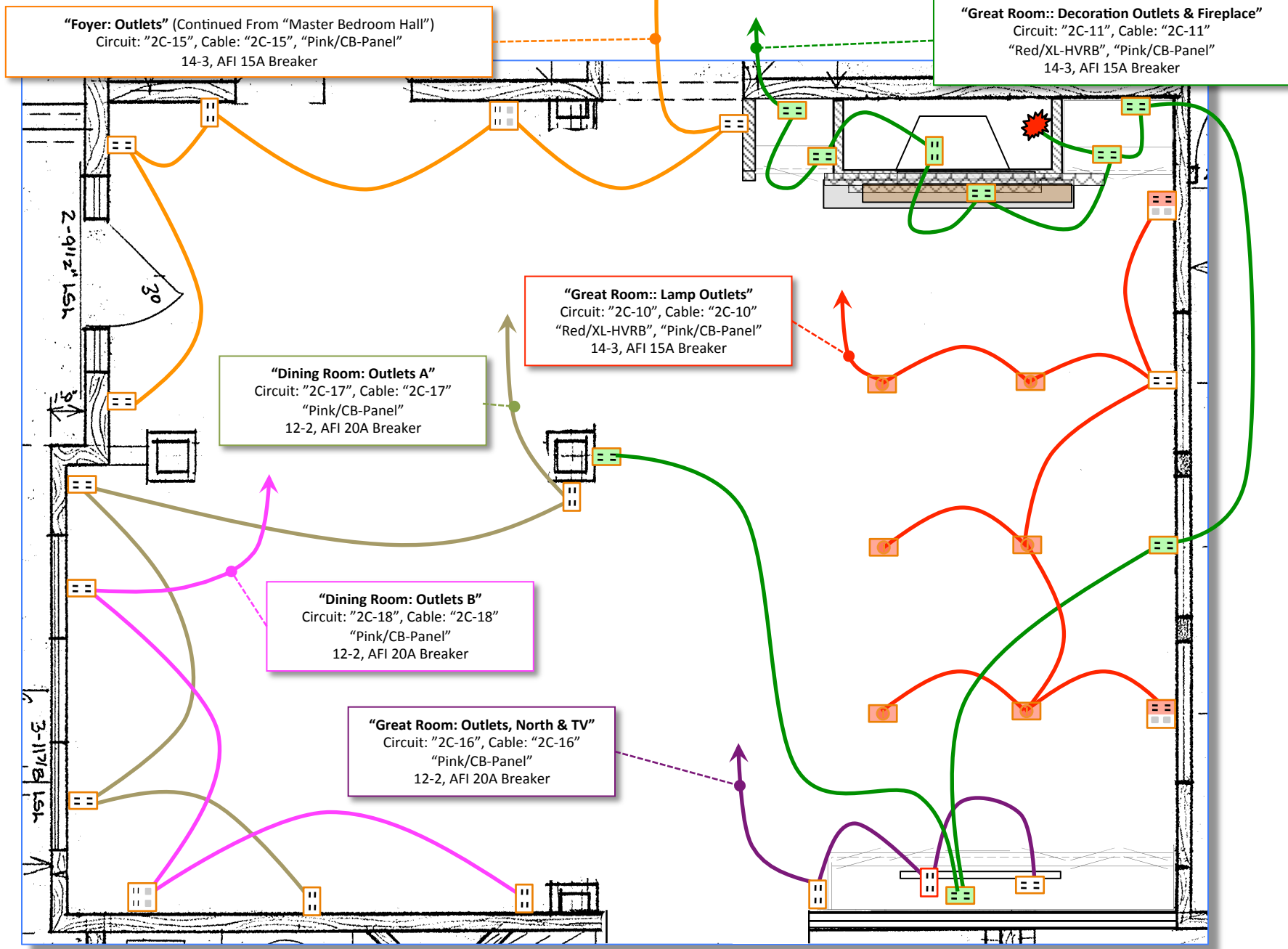
Scale: 4' per inch



Power

- = 15A Duplex (Un-switched)
- = 15A Duplex (½ Switched)
- = 20A Duplex (Un-switched)
- = 15A Floor (Switched)
- = 15A Duplex / LAN / Phone (½ Switched)

Scale: 4' per inch



"Foyer: Outlets" (Continued From "Master Bedroom Hall")
 Circuit: "2C-15", Cable: "2C-15", "Pink/CB-Panel"
 14-3, AFI 15A Breaker

"Great Room:: Decoration Outlets & Fireplace"
 Circuit: "2C-11", Cable: "2C-11"
 "Red/XL-HVRB", "Pink/CB-Panel"
 14-3, AFI 15A Breaker

"Great Room:: Lamp Outlets"
 Circuit: "2C-10", Cable: "2C-10"
 "Red/XL-HVRB", "Pink/CB-Panel"
 14-3, AFI 15A Breaker

"Dining Room: Outlets A"
 Circuit: "2C-17", Cable: "2C-17"
 "Pink/CB-Panel"
 12-2, AFI 20A Breaker

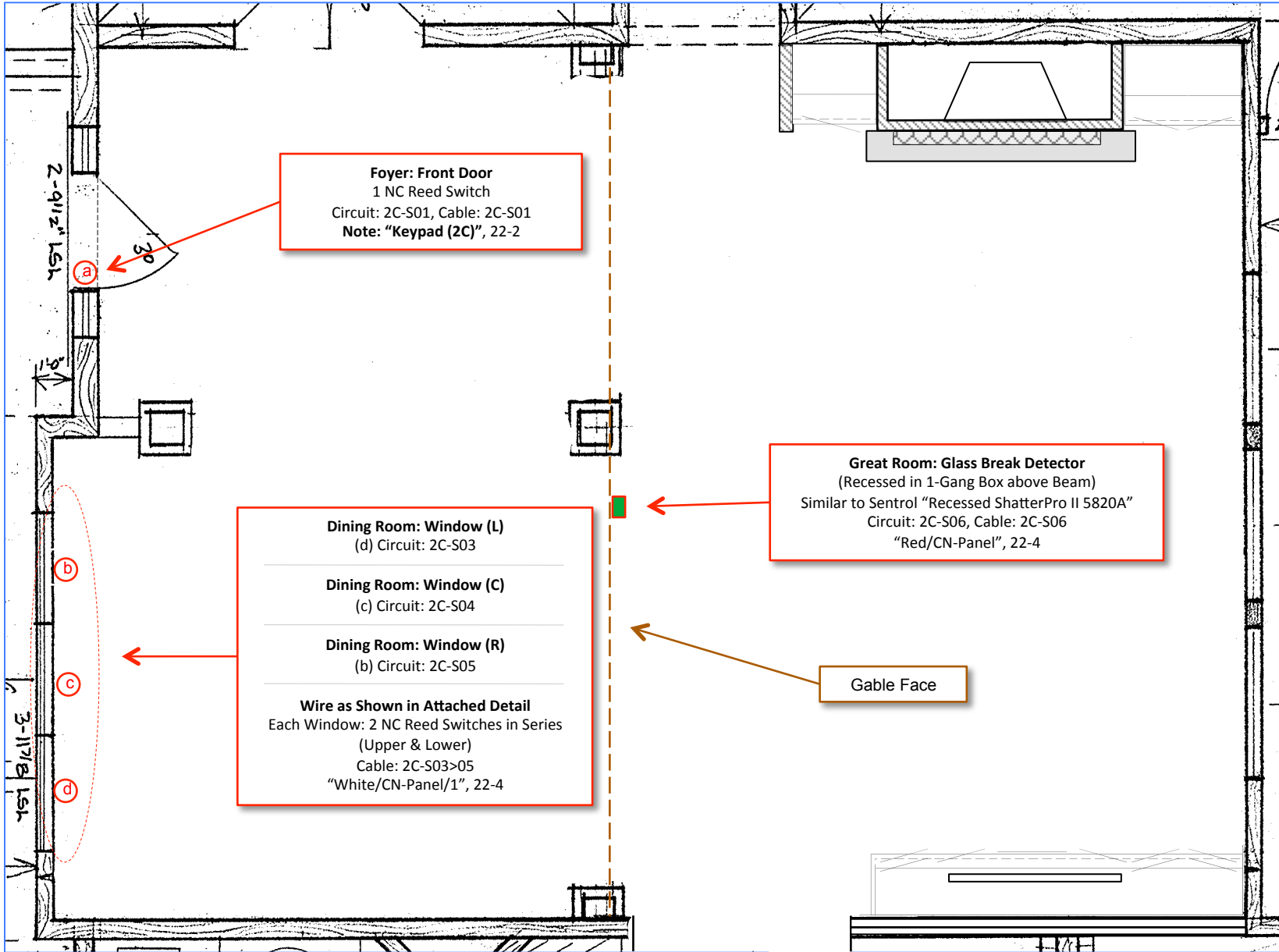
"Dining Room: Outlets B"
 Circuit: "2C-18", Cable: "2C-18"
 "Pink/CB-Panel"
 12-2, AFI 20A Breaker

"Great Room: Outlets, North & TV"
 Circuit: "2C-16", Cable: "2C-16"
 "Pink/CB-Panel"
 12-2, AFI 20A Breaker

Power Wiring

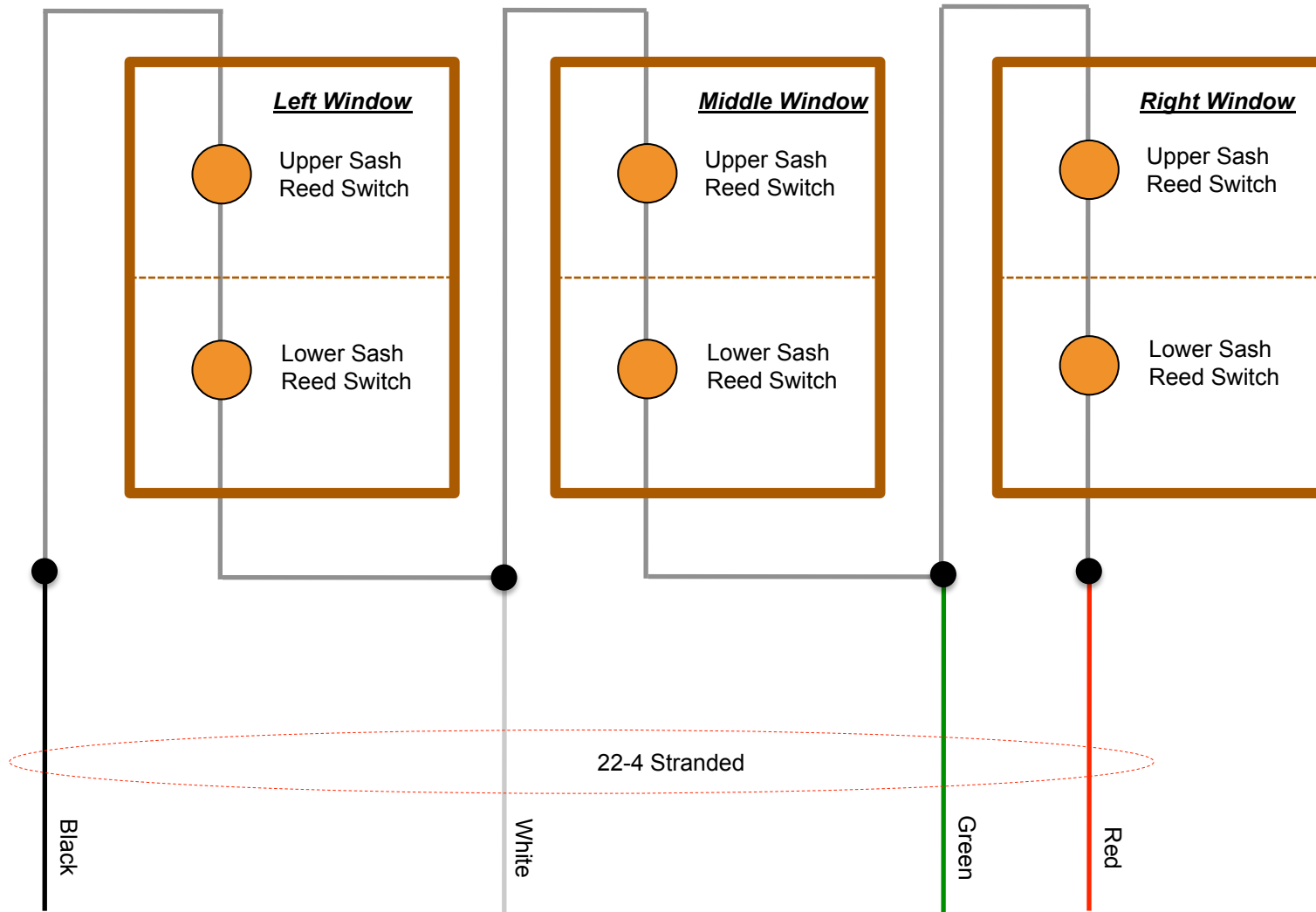
	= 15A Duplex (Un-switched)		= 15A Duplex (1/2 Switched)		= 20A Duplex (Un-switched)		= 15A Floor (Switched)		= 15A Duplex / LAN / Phone (1/2 Switched)
	= 15A Duplex (High)								

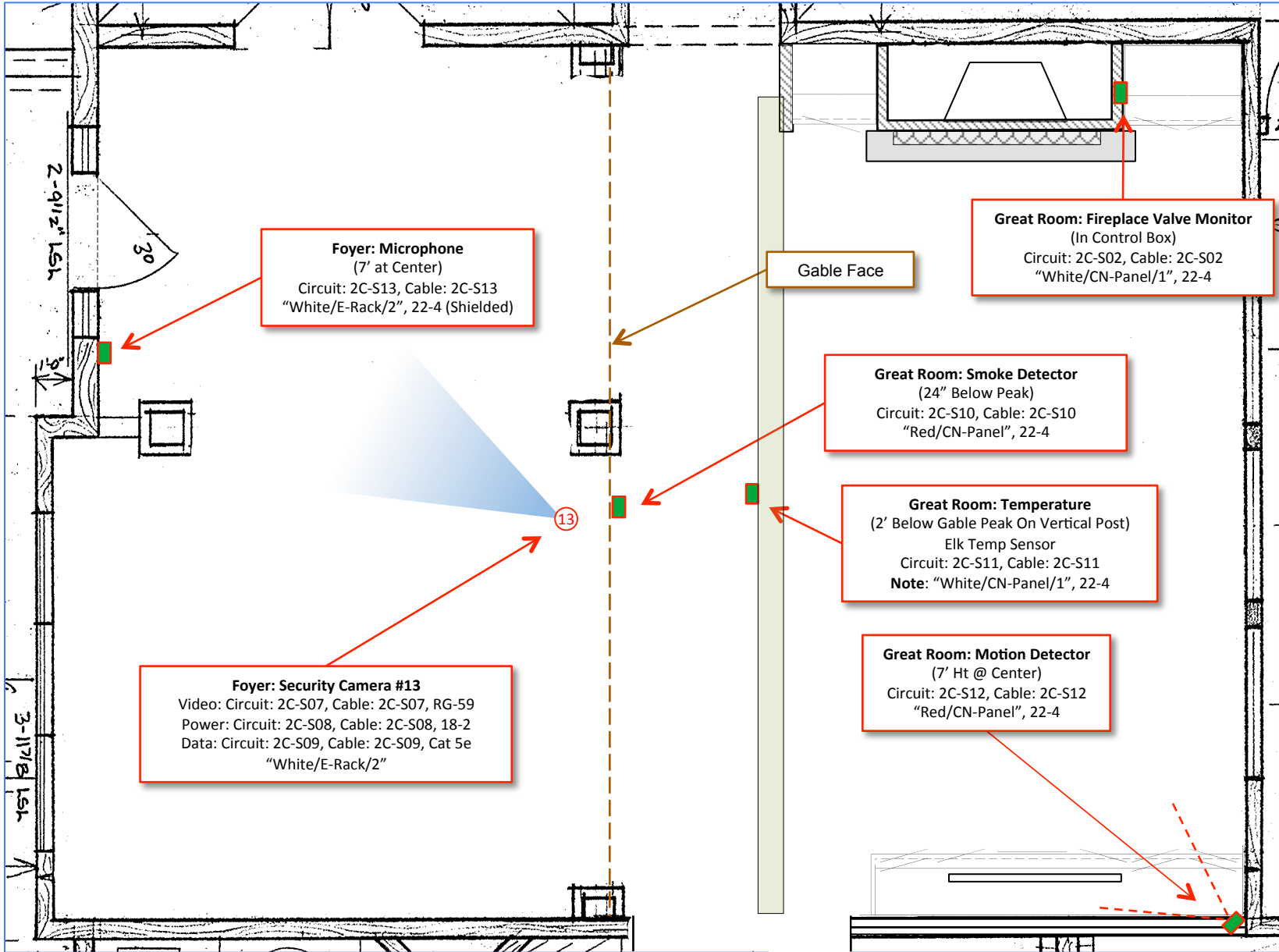
Scale: 4' per inch



(X) = NC Door/Window Sensor
 (Concealed Reed)

Scale: 4' per inch





Foyer: Microphone
 (7' at Center)
 Circuit: 2C-S13, Cable: 2C-S13
 "White/E-Rack/2", 22-4 (Shielded)

Foyer: Security Camera #13
 Video: Circuit: 2C-S07, Cable: 2C-S07, RG-59
 Power: Circuit: 2C-S08, Cable: 2C-S08, 18-2
 Data: Circuit: 2C-S09, Cable: 2C-S09, Cat 5e
 "White/E-Rack/2"

Great Room: Fireplace Valve Monitor
 (In Control Box)
 Circuit: 2C-S02, Cable: 2C-S02
 "White/CN-Panel/1", 22-4

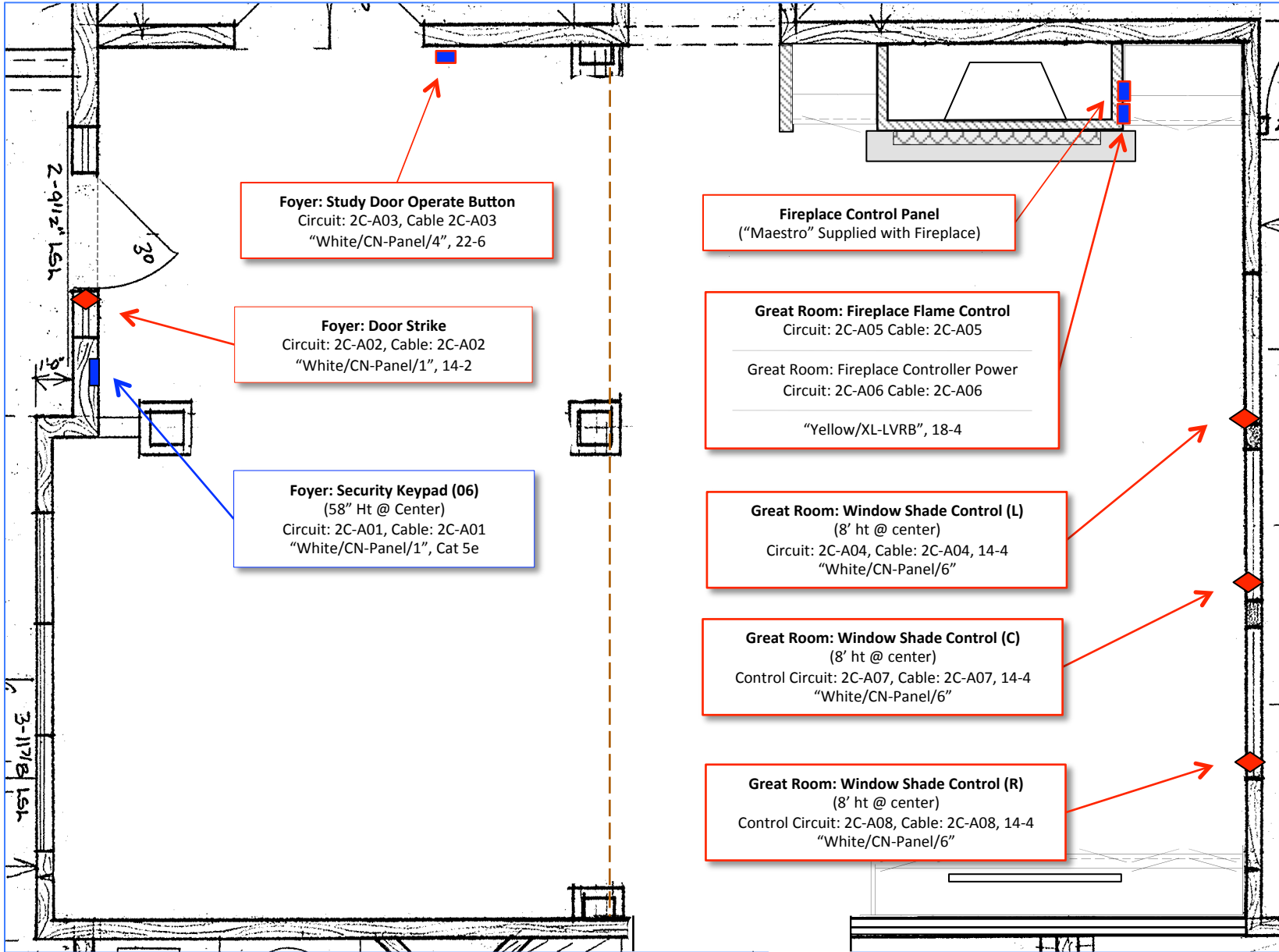
Great Room: Smoke Detector
 (24" Below Peak)
 Circuit: 2C-S10, Cable: 2C-S10
 "Red/CN-Panel", 22-4

Great Room: Temperature
 (2' Below Gable Peak On Vertical Post)
 Elk Temp Sensor
 Circuit: 2C-S11, Cable: 2C-S11
Note: "White/CN-Panel/1", 22-4

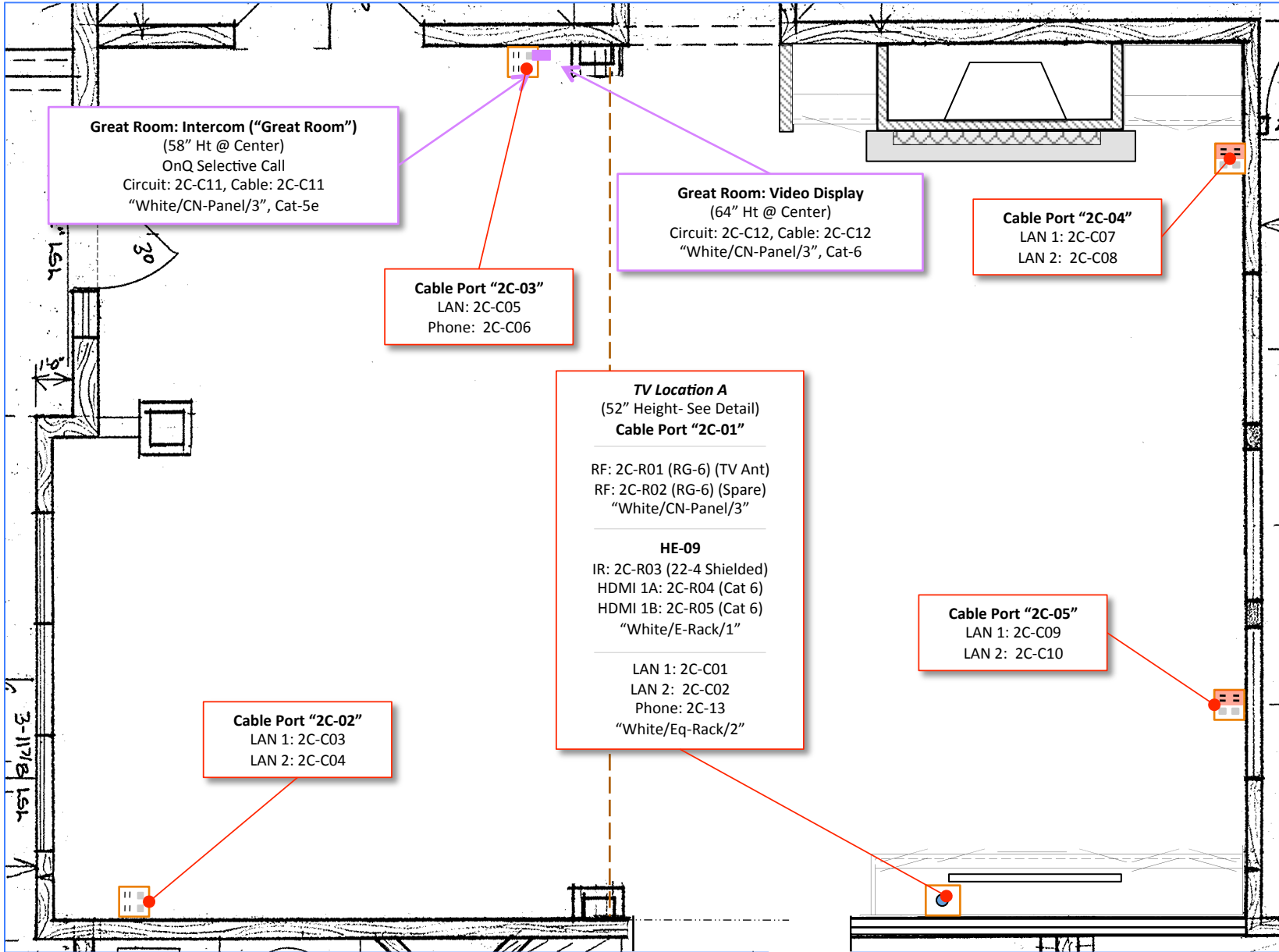
Great Room: Motion Detector
 (7' Ht @ Center)
 Circuit: 2C-S12, Cable: 2C-S12
 "Red/CN-Panel", 22-4


Gable Face

Scale: 4' per inch



Scale: 4' per inch



 = 15A Duplex / LAN / Phone

Scale: 4' per inch

Foyer: Background Audio (Zone 2-3)
 (8" Ceiling Speakers)
 South Circuit: 2C-R10 (L)
 North Circuit: 2C-R11 (R)
 Cable: 2C-R07/08, 16-4
 "White/E-Rack/1"

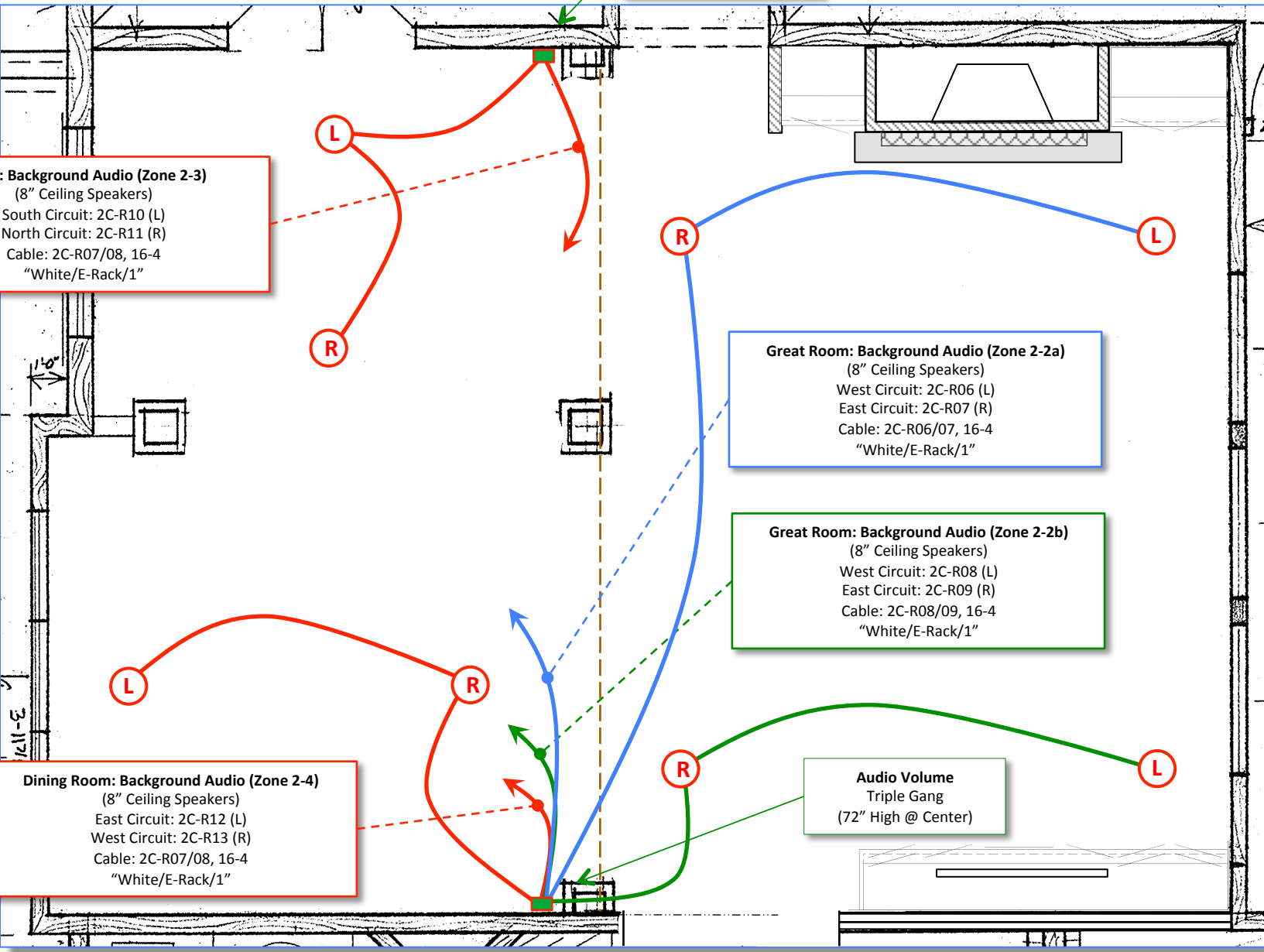
Great Room: Background Audio (Zone 2-2a)
 (8" Ceiling Speakers)
 West Circuit: 2C-R06 (L)
 East Circuit: 2C-R07 (R)
 Cable: 2C-R06/07, 16-4
 "White/E-Rack/1"

Great Room: Background Audio (Zone 2-2b)
 (8" Ceiling Speakers)
 West Circuit: 2C-R08 (L)
 East Circuit: 2C-R09 (R)
 Cable: 2C-R08/09, 16-4
 "White/E-Rack/1"

Dining Room: Background Audio (Zone 2-4)
 (8" Ceiling Speakers)
 East Circuit: 2C-R12 (L)
 West Circuit: 2C-R13 (R)
 Cable: 2C-R07/08, 16-4
 "White/E-Rack/1"

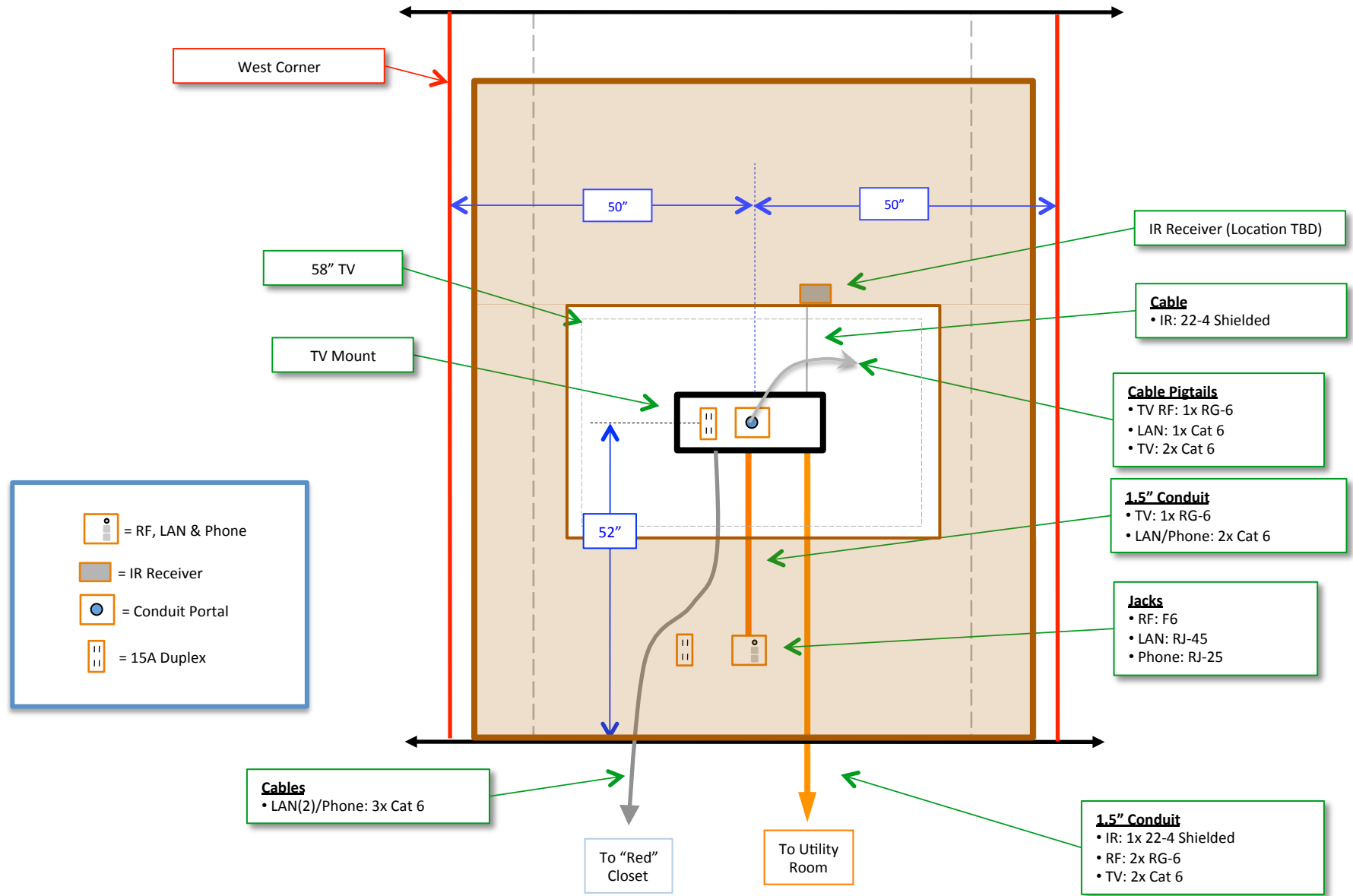
Audio Volume
 Triple Gang
 (72" High @ Center)

Audio Volume
 Single Gang
 (72" High @ Center)



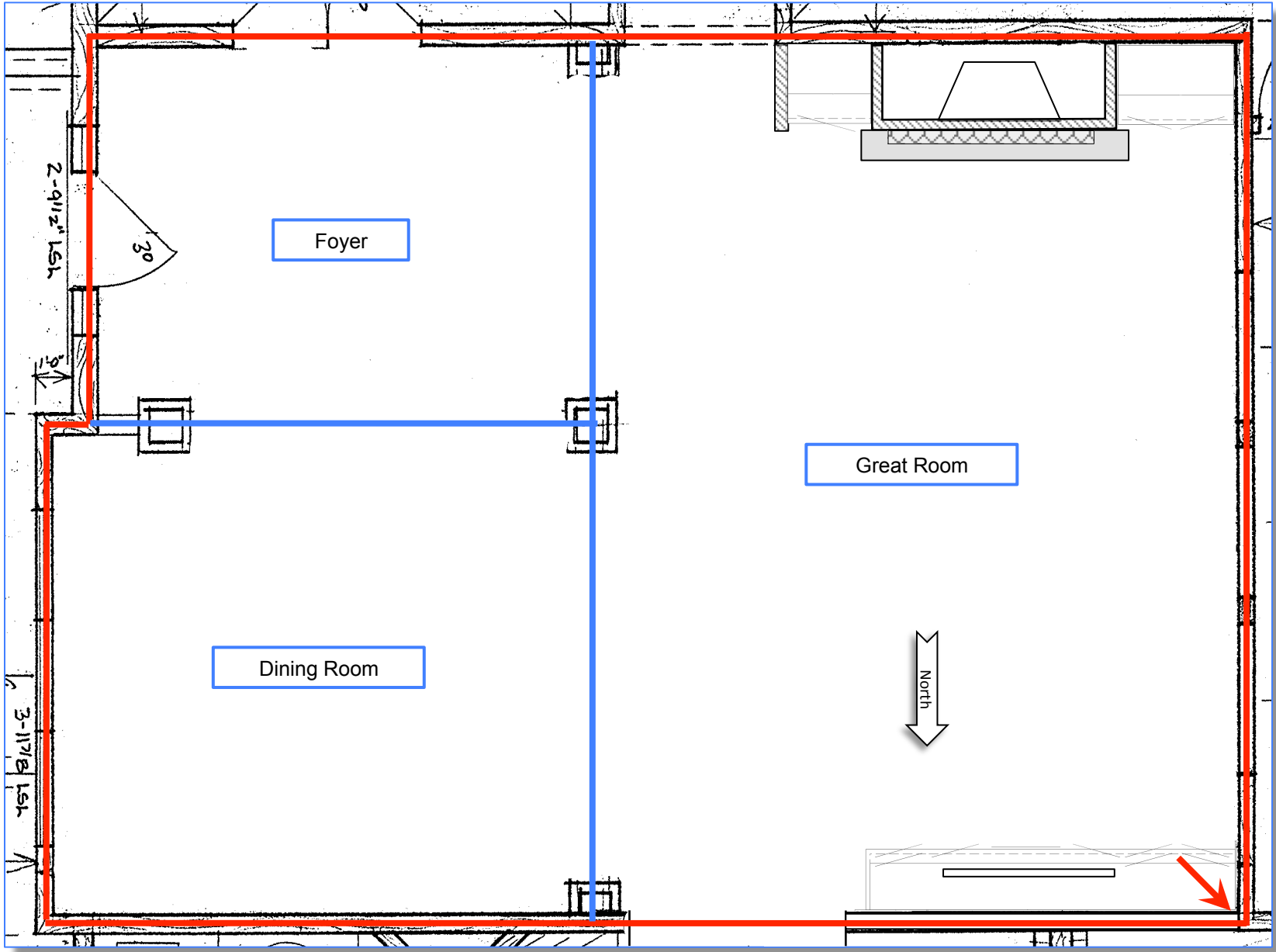
Audio

Scale: 4' per inch



TV Location Detail

Scale: 2' per inch



— = Area Boundary

— = Region Boundary

→ = Region Anchor Point (Corner)

Scale: 4' per inch